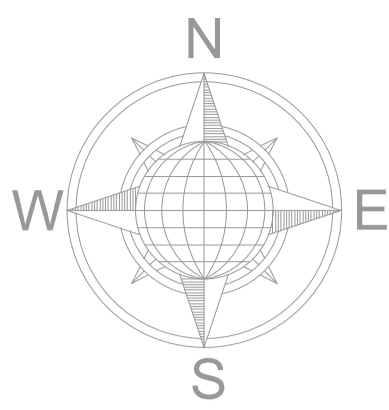


## 2.2 APPENDIX TO CHAPTER 2 – Topographical Survey



**LEGEND**  
Street furniture & Services

Over Head Wires (LUAS) - Pylon ESB	Bus Stop	Road Sign	Phone Box
Flowbed	Bus Stop	Street Light	Duct
Pipe	Bus Stop	Street Light	Duct
Light	Bus Stop	Street Light	Duct
Barrier	Bus Stop	Street Light	Duct
Trail Pit	Bus Stop	Street Light	Duct
Bus/Tram Shelter	Bus Stop	Street Light	Duct
Postbox	Bus Stop	Street Light	Duct
Valve - General	Bus Stop	Street Light	Duct
Water Valve	Bus Stop	Street Light	Duct
Gas Valve	Bus Stop	Street Light	Duct
Blow Valve	Bus Stop	Street Light	Duct
Air Valve	Bus Stop	Street Light	Duct
Street Cock	Bus Stop	Street Light	Duct
C P Post	Bus Stop	Street Light	Duct
Marker Post	Bus Stop	Street Light	Duct
Traffic Light	Bus Stop	Street Light	Duct
Parking Meter	Bus Stop	Street Light	Duct
Plane Aerial Mark	Bus Stop	Street Light	Duct
Smart Card Validator	Bus Stop	Street Light	Duct
Unknown Valve	Bus Stop	Street Light	Duct

**Natural Features**

Surface Change	Water Level	Golf
Land Drain	Crown Level	Fair Way
Bottom of Slope	Invert Level	Green
Top of Slope	Bed Level	Tree Box
Ditch	Spotlight	Other
Water Edge / Lake / Pond	Spotlight	Survey Station
Hedge / Trees Dip Line / Vegetation	Spotlight	Photo point
Tree Coniferous	Spotlight	Top of Tree
Tree Deciduous	Spotlight	Top of Tree

**Built Features**  
Roads & Road Markings

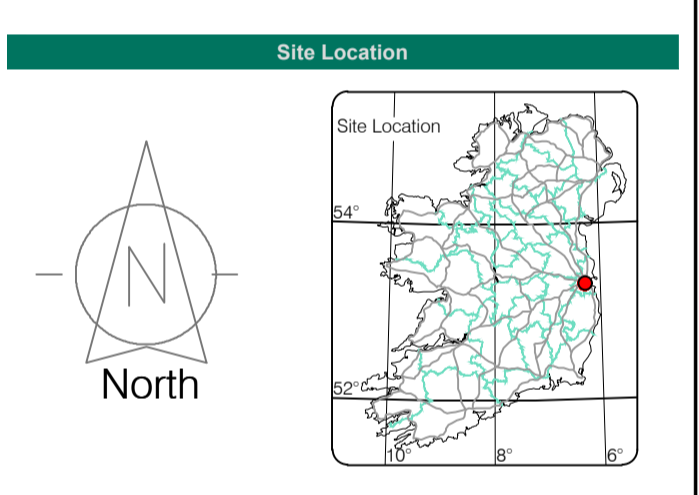
Building	Fence	Floor Level
Edge of Road	Gate	Apex Height
Kerb Bottom	Road Centreline	Eaves Height
Kerb Top	Top of Wall	Parapet Height
Bridge Abutment	Hoarding	Soffit Elevation
Bridge Deck	Property Line	Step Level
Building Footprint	Road Scar	Concrete Pad
Footpath / Platform Train & Tram	Top of Fence	Track
Damp Proof / Course / Verge	Wall / Retaining Wall	Track
Bridge Pier / Wall & Gate Pillar / LUAS Trackbed	Railway / Tram Rail / Gating / Ramp	Track
Cycleway / Private Landing Area	Building Canopy / Roof / Overhang	Track

**Murphy Geospatial Disclaimer**

The user or recipient of this survey data understands and acknowledges that this data may be inaccurate or contain errors or omissions and the user or recipient assumes full responsibility for any risks or damages resulting from, arising from, or in connection with any use of or reliance upon data displayed herein. Although significant care has been exercised to produce surveys that satisfy survey accuracy standards, these surveys are only as accurate as the source data from which they were compiled. Although all reasonable care has been taken to locate all features visible at the time of the survey, there is no guarantee that all will be shown on the drawing, as some above ground features may have obstructed the survey. Wherever possible, areas unable to be surveyed will be labelled as 'UTS' (Unable To Survey).

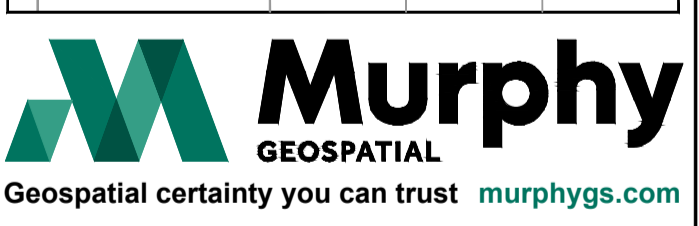
The Company shall not be liable for any inaccuracy of the data provided beyond the specified scale or accuracy, or for any matters resulting from their use for purposes other than that stated in the Contract. No liability shall attach to the Surveyor in respect of any consequential loss or damages suffered by the Client.

The Client must promptly notify the Company of any errors in mapping of which it becomes aware. If misleading, inaccurate or otherwise inappropriate information is brought to the Company's attention the Company shall identify any such inaccuracy or error in a survey. It shall use all reasonable endeavours to fix or remove it and if necessary in certain instances, the Company being on notice of any such misleading, inaccurate or otherwise inappropriate information, it will re-conduct the survey and reproduce the data to within the specified scale or accuracy.



**Revisions**

Rev	Description	Surveyed by	Drawn by	Checked by
0	First Issue	DH - 16/07/2025	MR - 17/07/2025	PK - 17/07/2025
1	Trees details added.	SM - 24/07/2025	MR - 30/07/2025	PK - 31/07/2025

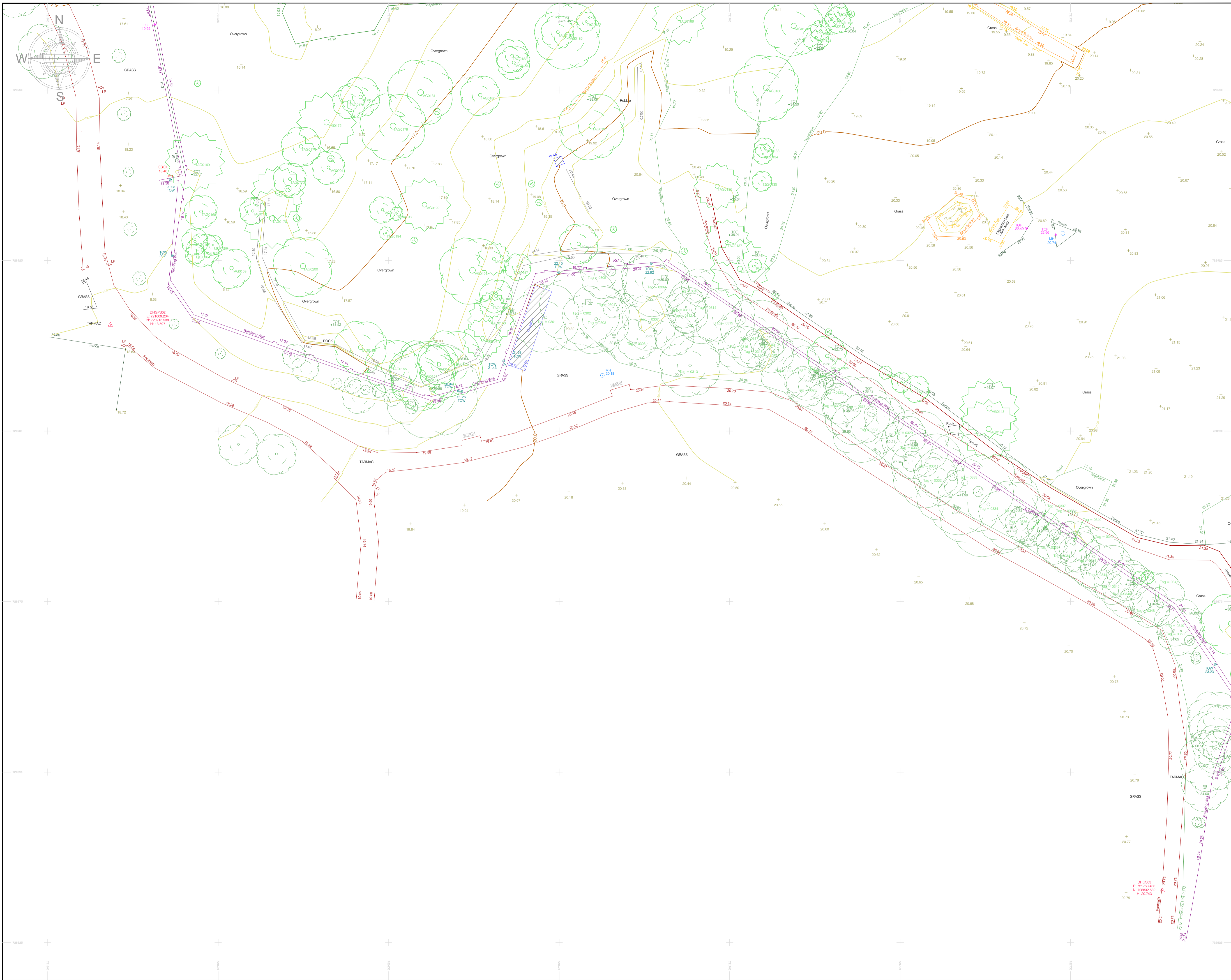


**Ireland Head Office**  
 Global House Business Campus  
 Kicullen  
 R506 K376, Ireland  
 Phone: +353 (0)45 484 040 Email: info@murphys.ie

THE SURVEY ASSOCIATION  
 RICS  
 GPR  
 RICS

Offices in London, Birmingham, Manchester, Glasgow, Dublin, Cork, Kildare, Cologne, Barcelona, Geneva.

Client	O Mahony Pike Architecture
Project	Additional - St. Teresa's Blackrock - Carmond house
Description	Topographical Survey
Survey Grid	ITM15
Survey Datum	Malin Head
RICS Band	Band F
Presentation Scale	NTS@A1
MGS Project ID	64411
Drawing Number	MGS64411_T_ITM_Rev1-00



### LEGEND

#### Street furniture & Services

Over Head Wires (LUAS) - Pylon ESB	Bus Stop	Post Box	Phone Box
Flowbed	Bus Shelter	Bench Seat	Duct
Pipe	Boiler	Kiosk	Gas
Lift	Beacon	Guilty	CP Box
Barrier	Control Cover	WC	CP Box
Pump	Box Hole	Waste Bin	Waste Bin
Trail Pit	Electricity Pole	Hydrant	Hydrant
Bus/Tram Shelter	Telegraph pole	Fire Hydrant	Fire Hydrant
Postbox	OCS Pole	ESB Box	ESB Box
Valve - General	OCTV Camera Pole	ESB Inspection Cover	ESB Inspection Cover
Water Valve	LP	Traffic Control Box	Traffic Control Box
Gas Valve	Foul Manhole	LUAS Technical Cubicle	LUAS Technical Cubicle
Blow Valve	Surface Water MH	Ticket Vending Machine	Ticket Vending Machine
Air Valve	AlarMates	Wash Water Cover	Wash Water Cover
Street Cook	As Overlapping Wires	Telecom Inspection Cover	Telecom Inspection Cover
C/P Post	Services Inspection Cover	Monument / Toilets	Monument / Toilets
Marker Post	Traffic Inspection Cover	Trunk Storage	Trunk Storage
Traffic light	Cable TV Inspection Cover	Basement MH Cover & Pip	Basement MH Cover & Pip
Plane Meter	ESAT Inspection Cover	Dished Aerial Mark	Dished Aerial Mark
Smart Card Validator	NTL Inspection Cover	Stay for pole	Stay for pole
Unknown Valve	Encom Inspection Cover	Pipe Protection	Pipe Protection
	Roading Eye	Washout	Washout

#### Natural Features

Surface Change	Water Level	Golf	Fair Way
Land Drain	Crown Level	GREEN	Green
Bottom of Slope	Invert Level	TREBOX	Tree Box
Top of Slope	Bed Level	SA	Survey Station
Ditch	Spotlight	SA	Survey Station
Water Edge / Lake / Pond			
Hedge / Trees Dip Line / Vegetation			
Tree Continuous	Tree Deciduous		Top of Tree

#### Built Features

##### Roads & Road Markings

Building	Fence	Floor Level
Edge of Road	Gate	Apex Height
Kerb Bottom	Road Centreline	Eaves Height
Kerb Top	Top of Wall	Parapet Height
Bridge Abutment	Hoarding	Soffit Elevation
Bridge Deck	Property Line	Step Level
Building Footings	Road Scarps	Concrete Pad
Footpath / Platform Train & Tram	Top of Fence	Track
Damp Proof Course / Veige	Wall / Retaining Wall	
Bridge Pier / Wall & Gate Pillar / LUAS Trackbed	Railway / Tram Rail / Grating / Ramp	
Cycleway / Private Landing Area	Building Canopy / Roof / Overhang	

#### Murphy Geospatial Disclaimer

The user or recipient of this survey data understands and acknowledges that this data may be inaccurate or contain errors or omissions and the user or recipient assumes full responsibility for any risks or damages resulting from, arising from, or in connection with any use of or reliance upon data displayed herein. Although significant care has been exercised to produce surveys that satisfy survey accuracy standards, these surveys are only as accurate as the source data from which they were compiled. Although all reasonable care has been taken to locate all features visible at the time of the survey, there is no guarantee that all will be shown on the drawing, as some above ground features may have obstructed the survey. Wherever possible, areas unable to be surveyed will be labelled as 'UTS' (Unable To Survey).

The Company shall not be liable for any inaccuracy of the data provided beyond the specified scope or accuracy, or for any matters resulting from their use for purposes other than that stated in the Contract. No liability shall attach to the Surveyor in respect of any consequential loss or damages suffered by the Client.

The Client must promptly notify the Company of any errors in mapping of which it becomes aware. If misleading, inaccurate or otherwise inappropriate information is brought to the Company's attention the Company shall identify any such inaccuracy or error in a survey, it shall use all reasonable endeavours to fix or remove it and if necessary in certain instances, the Company being on notice of any such misleading, inaccurate or otherwise inappropriate information, it will re-conduct the survey and reproduce the data to within the specified scope or accuracy.

#### Site Location

#### Revisions

Rev	Description	Surveyed by	Drawn by	Checked by
0	First Issue	DH - 16/07/2025	MR - 17/07/2025	PK - 17/07/2025
1	Trees details added.	SM - 24/07/2025	MR - 30/07/2025	PK - 31/07/2025

**Murphy**  
GEOSPATIAL

Geospatial certainty you can trust [murphygs.com](http://murphygs.com)

Topographic surveys, Measured Building Surveys, Setting-Out, As-Built Surveys, Hydrographic Surveys, Legal Mapping, Pipeline Surveys, Services Location, Ground Penetrating Radar, Laser Scanning, Rectified Photography

**Ireland Head Office**

Global House Business Campus  
R506 K376, Ireland  
Phone: +353 (0)45 484 040 Email: [info@murphygs.ie](mailto:info@murphygs.ie)

THE SURVEY ASSOCIATION  
SCSI  
RICS  
GPR

Offices in London, Birmingham, Manchester, Glasgow, Dublin, Cork, Kildare, Cologne, Barcelona, Genoa.

Client	O Mahony Pike Architecture
Project	Additional - St. Teresa's Blackrock - Carmond house
Description	Topographical Survey
Survey Grid	ITM15
Survey Datum	Malin Head
RICS Band	Band F
Presentation Scale	1:250 @A1
MGS Project ID	64411
Drawing Number	MGS64411_T_ITM_Rev1-01

© Copyright 2025 MURPHY GEOSPATIAL